

An architectural rendering of a modern school building. The main building is a long, single-story structure with a light-colored brick or stone facade and a series of rectangular windows. To the right, there is a taller section with a large glass facade. A white car is parked in a dark asphalt parking area in front of the building. Several people are standing near the glass-walled section. The scene is set against a sky with soft, colorful clouds, suggesting dawn or dusk. There are trees and greenery around the building.

# Collège de Monflanquin

## Conseil Général de Lot & Garonne

PERSPECTIVE - Vue depuis

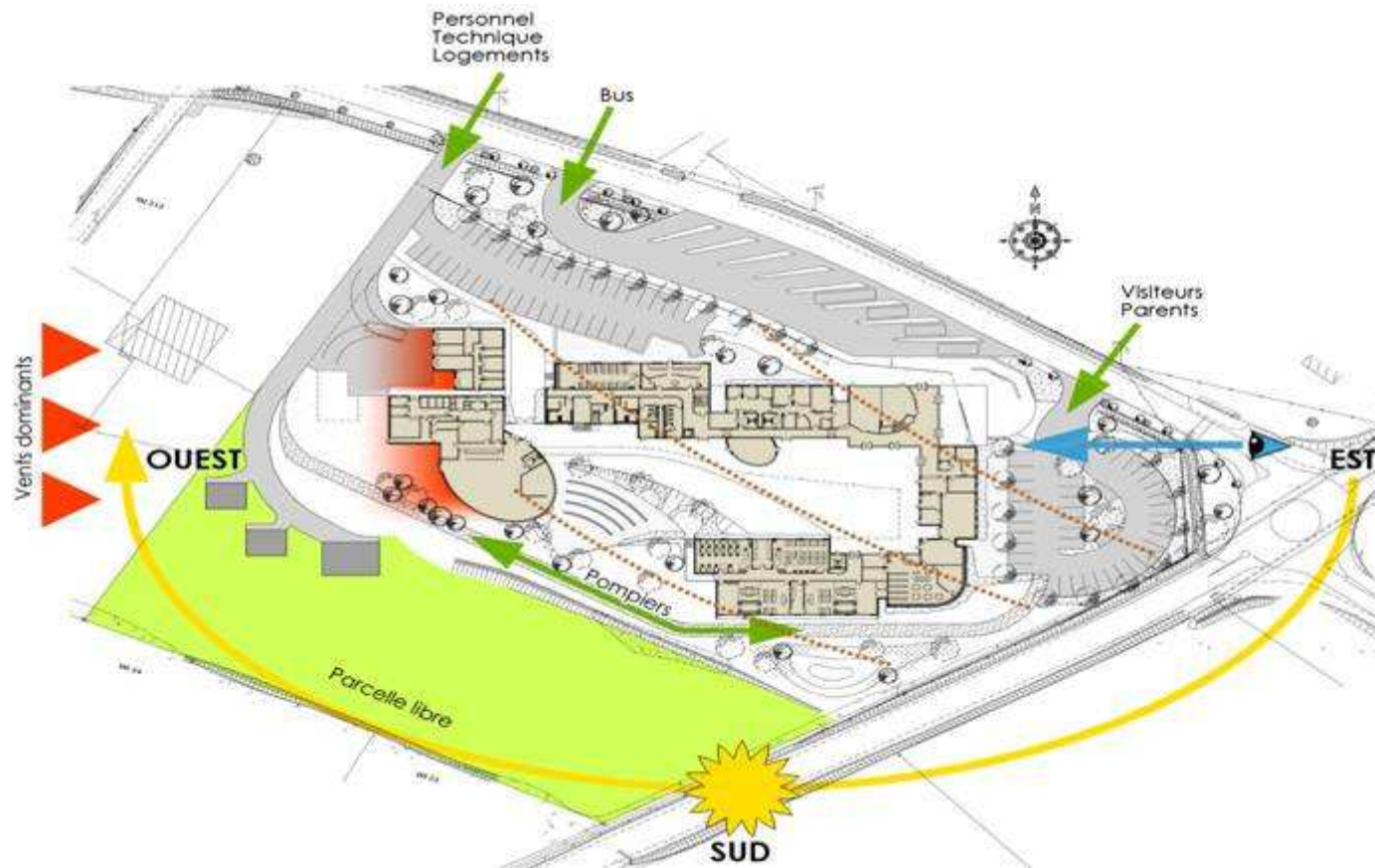


# Vue depuis le futur rond point



# Plan de Masse



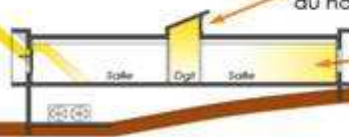


SUD

Brises-soleil et étagères à lumière du sud

Lumière indirecte du nord

Lumière indirecte du nord



Implantation des CTA profitant du dénivelé du terrain

NORD

Brises-soleil et étagères à lumière du sud

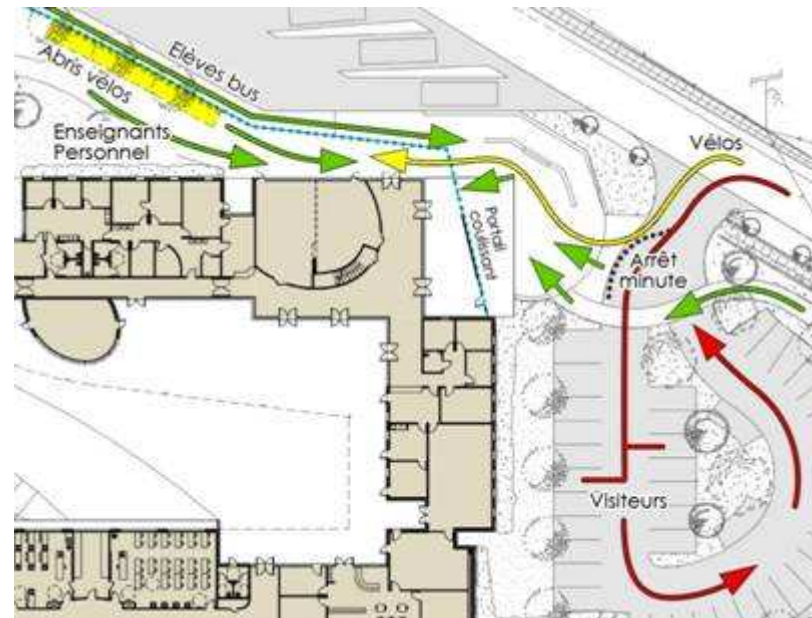
Lumière indirecte du nord

Lumière indirecte du nord

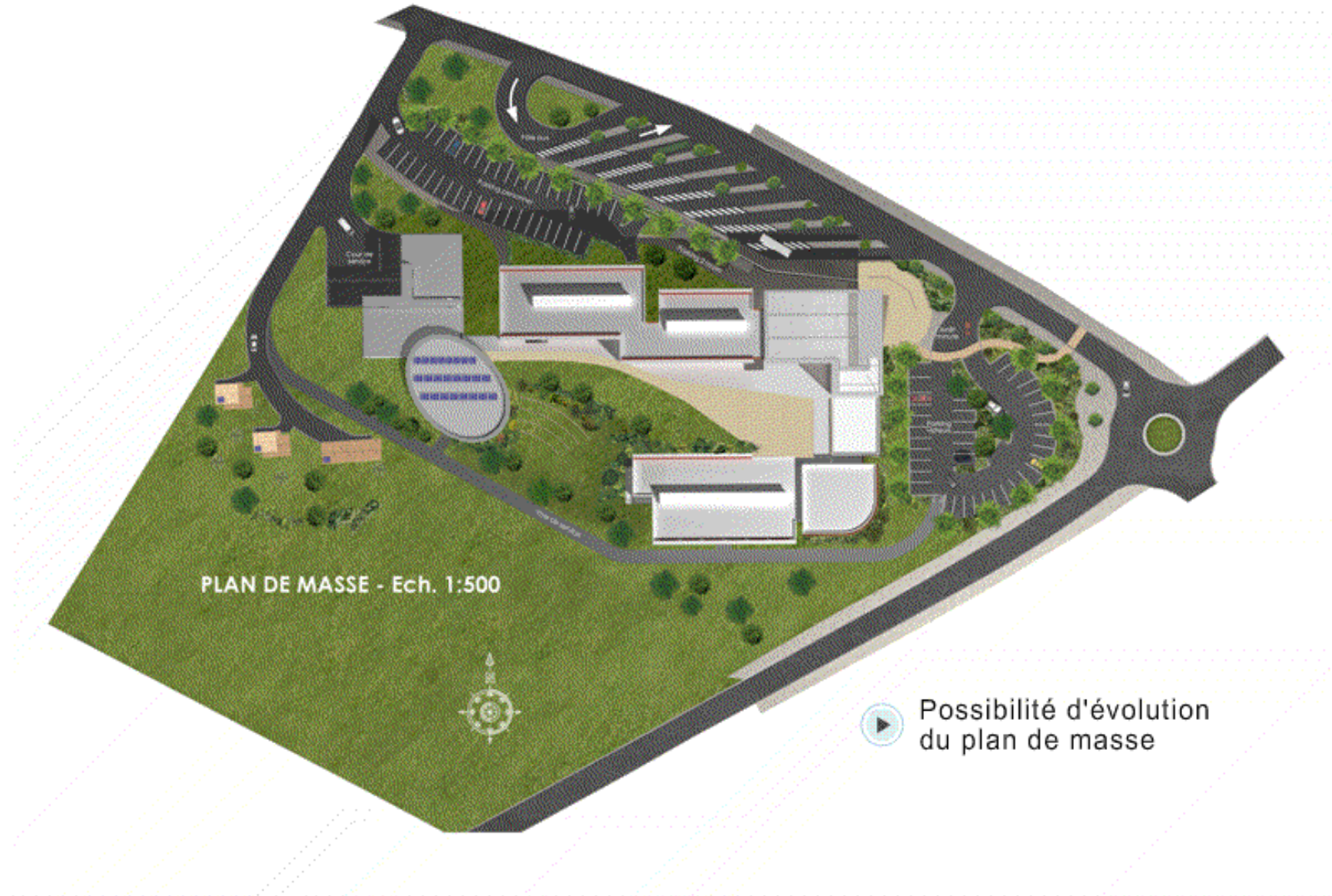


Courserie

# Schémas d'accès



# Evolutions possibles



# Arrivée depuis Monflanquin





# Plan Rez de Chaussée

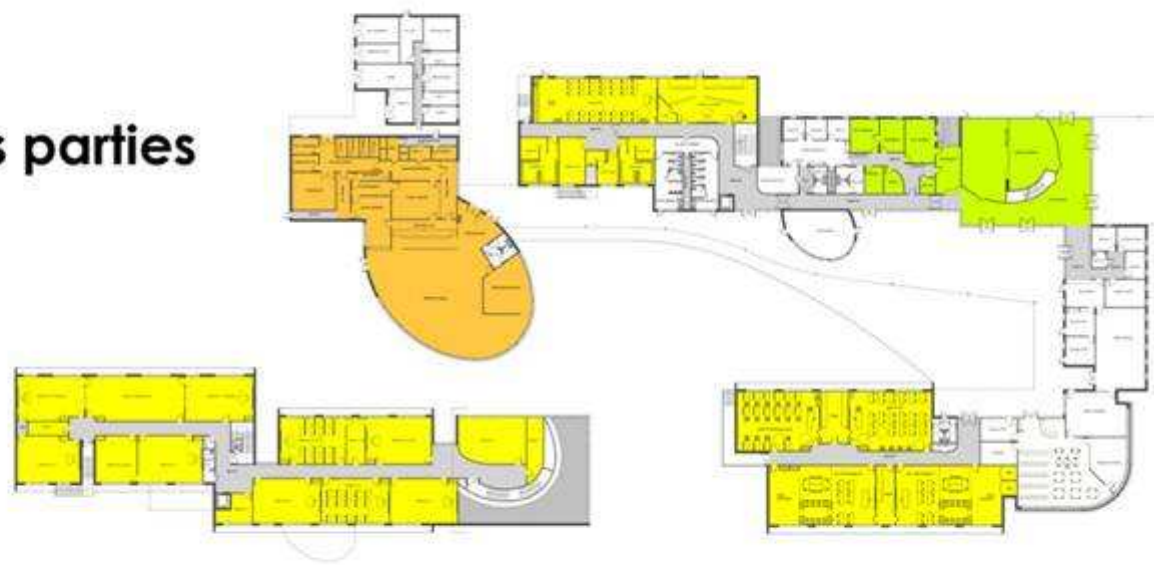


# Plan 1° Etage



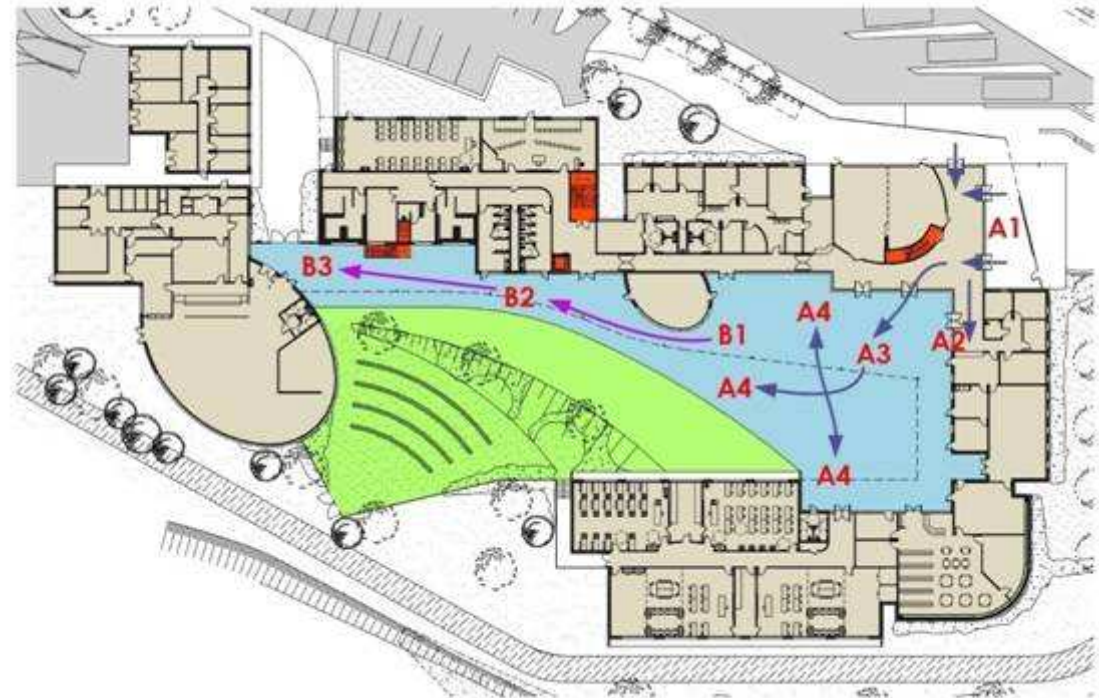
# Croquis Articulation des parties

- Administration
- Enseignements
- Restauration

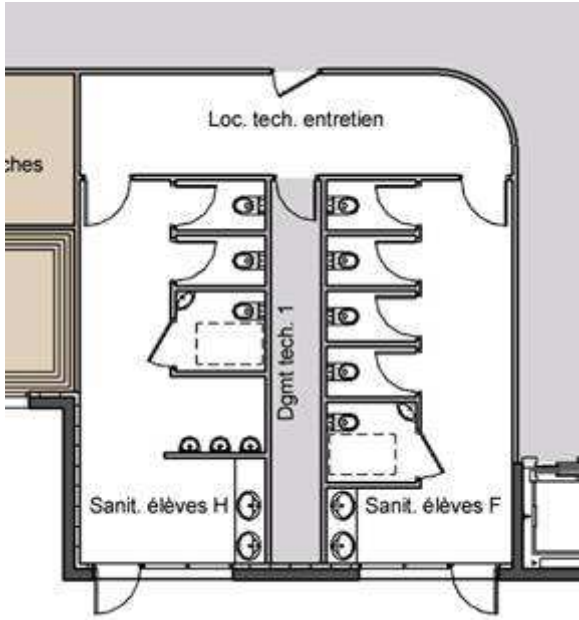
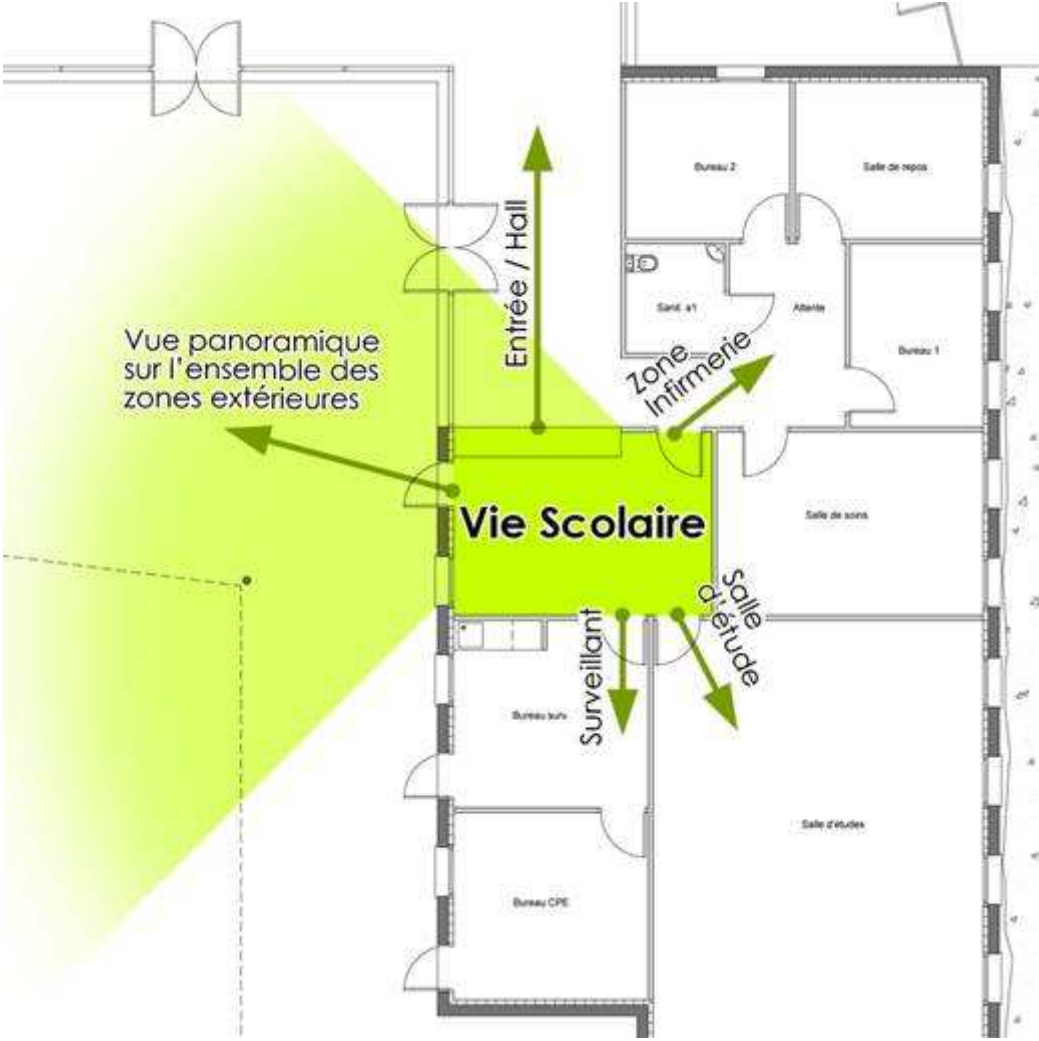


# Flux des Elèves

## Flux élèves



# Vie Scolaire





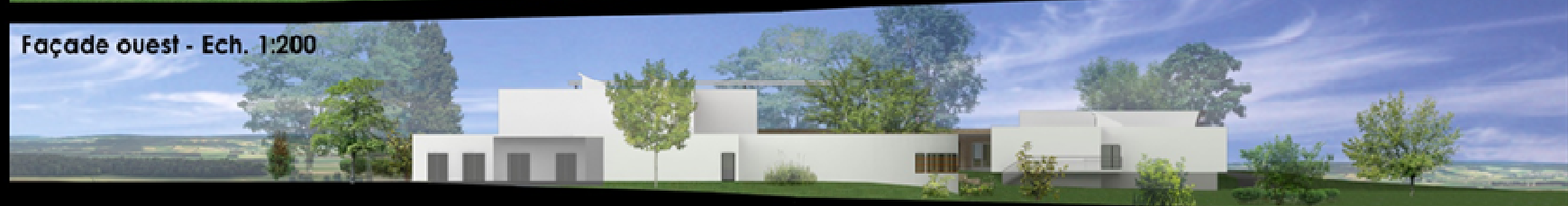
Façade est - Ech. 1:200



Façade nord - Ech. 1:200

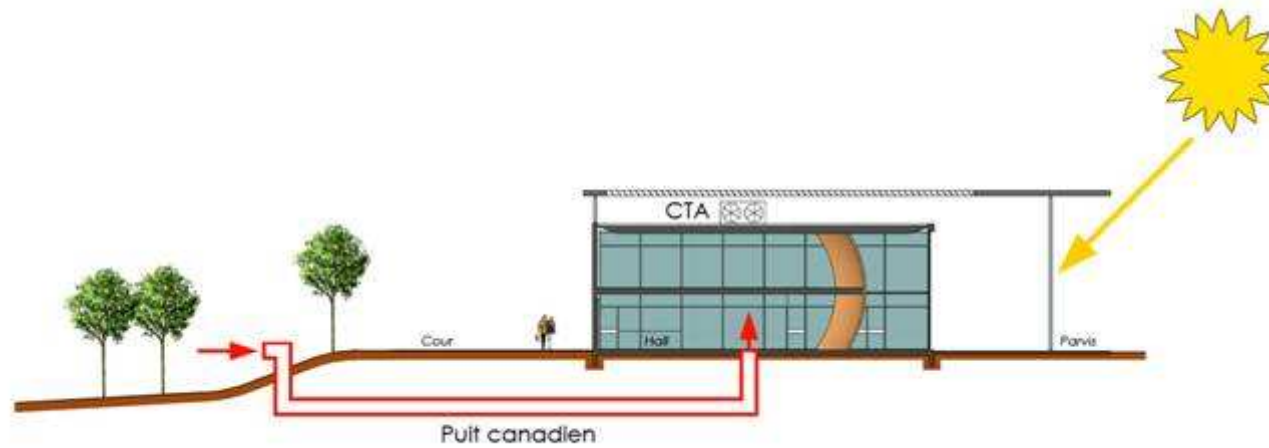


Façade sud - Ech. 1:200

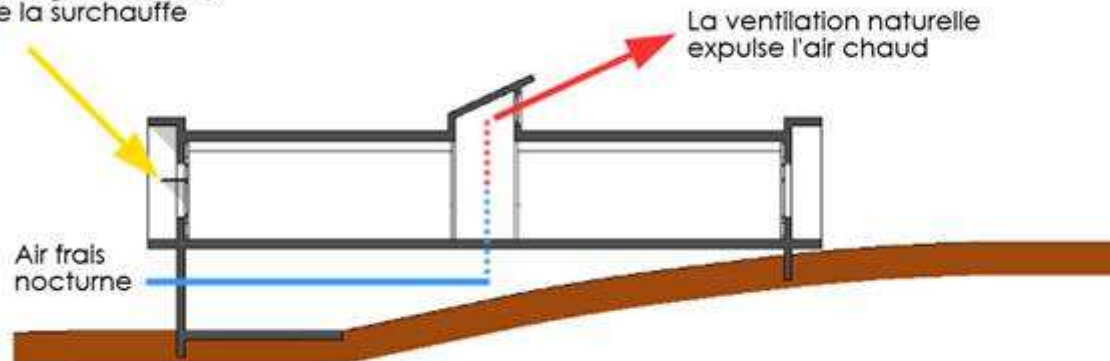


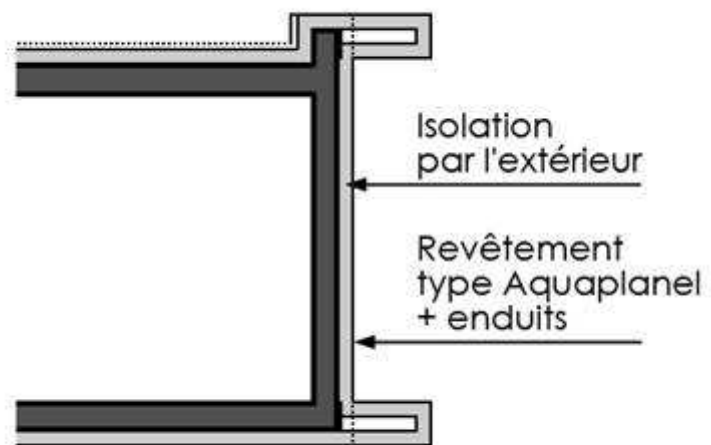
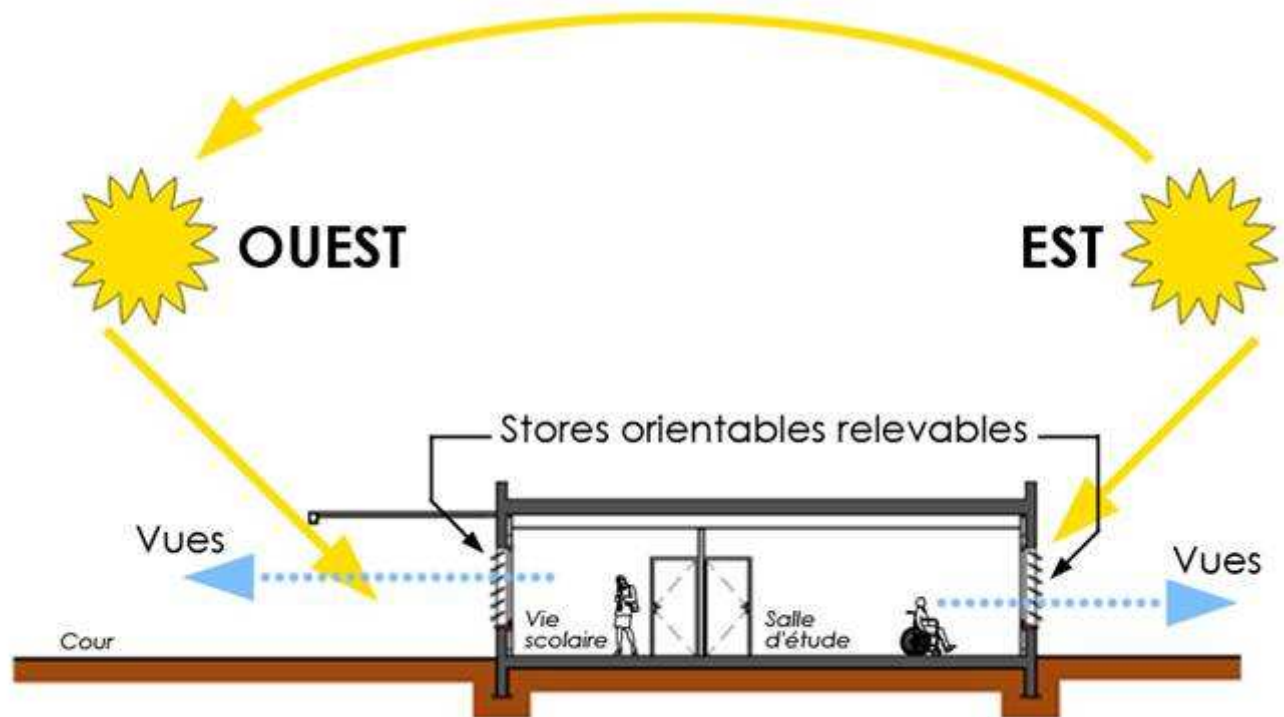
Façade ouest - Ech. 1:200

# Puit canadien / Ventilation

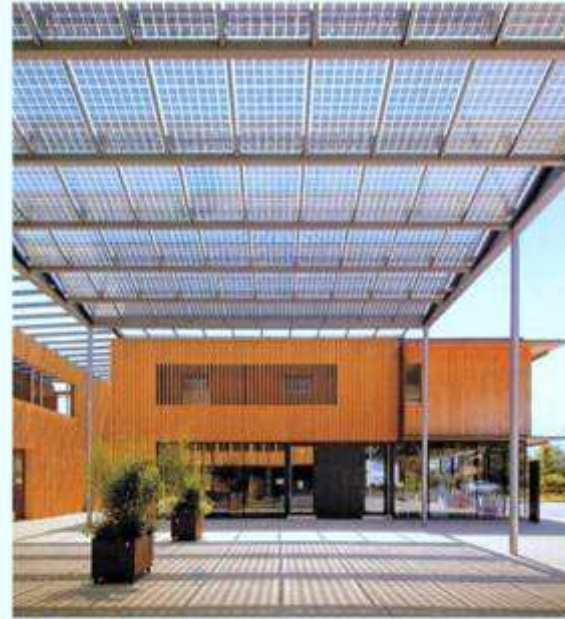


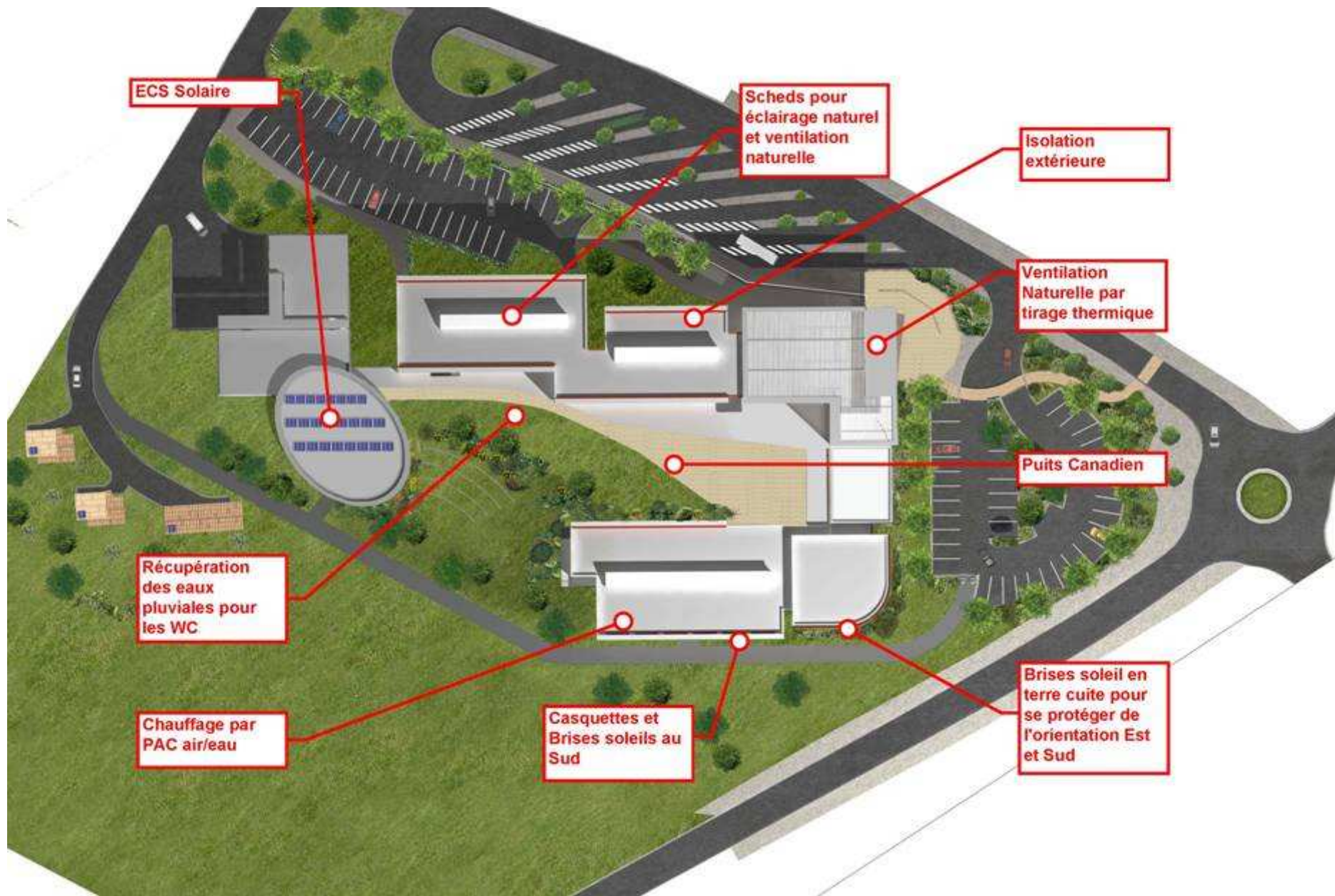
Les étagères à lumière protègent les salles de la surchauffe











ECS Solaire

Scheds pour  
éclairage naturel  
et ventilation  
naturelle

Isolation  
extérieure

Ventilation  
Naturelle par  
tirage thermique

Puits Canadien

Récupération  
des eaux  
pluviales pour  
les WC

Chauffage par  
PAC air/eau

Casquettes et  
Brises soleils au  
Sud

Brises soleil en  
terre cuite pour  
se protéger de  
l'orientation Est  
et Sud

# Espaces de détente

